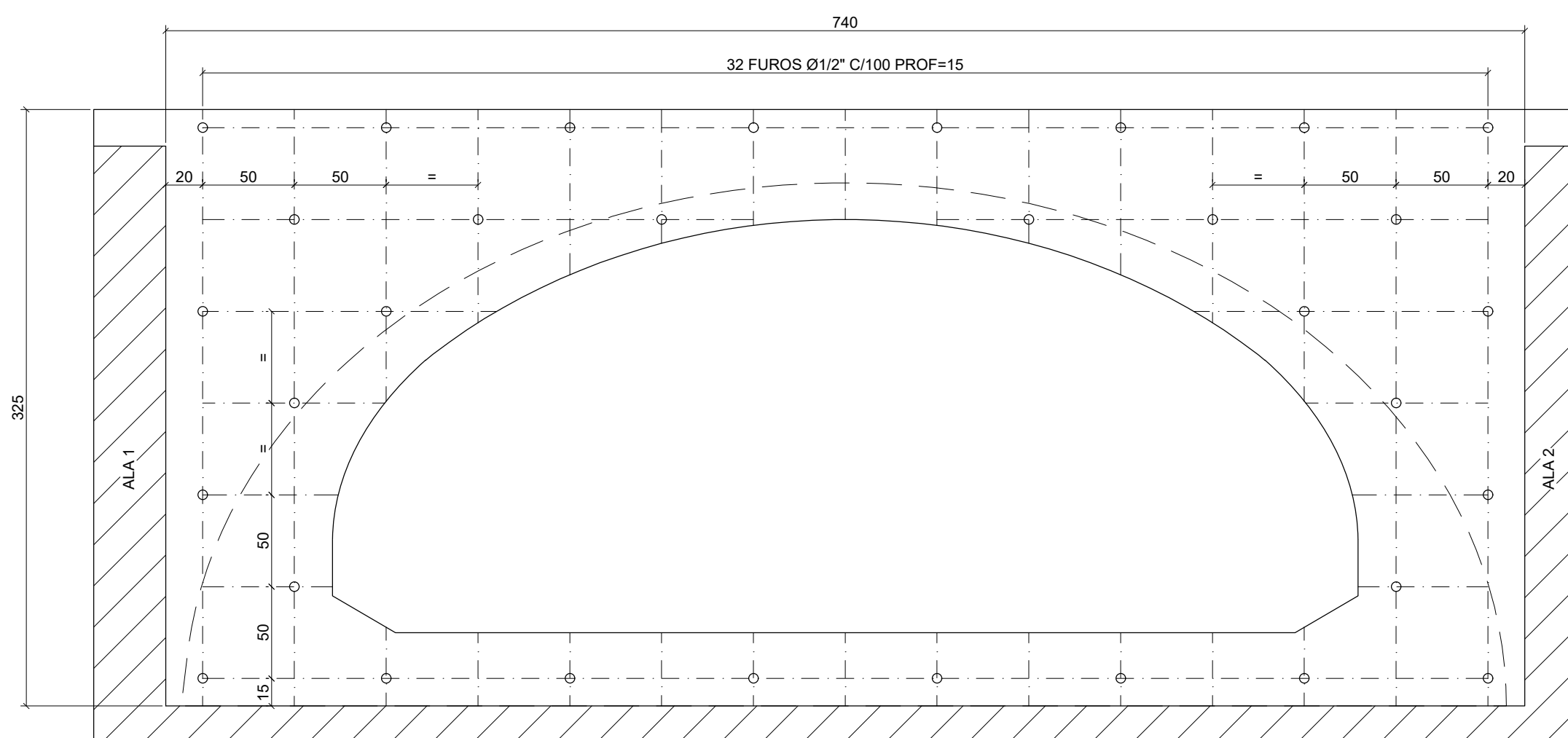
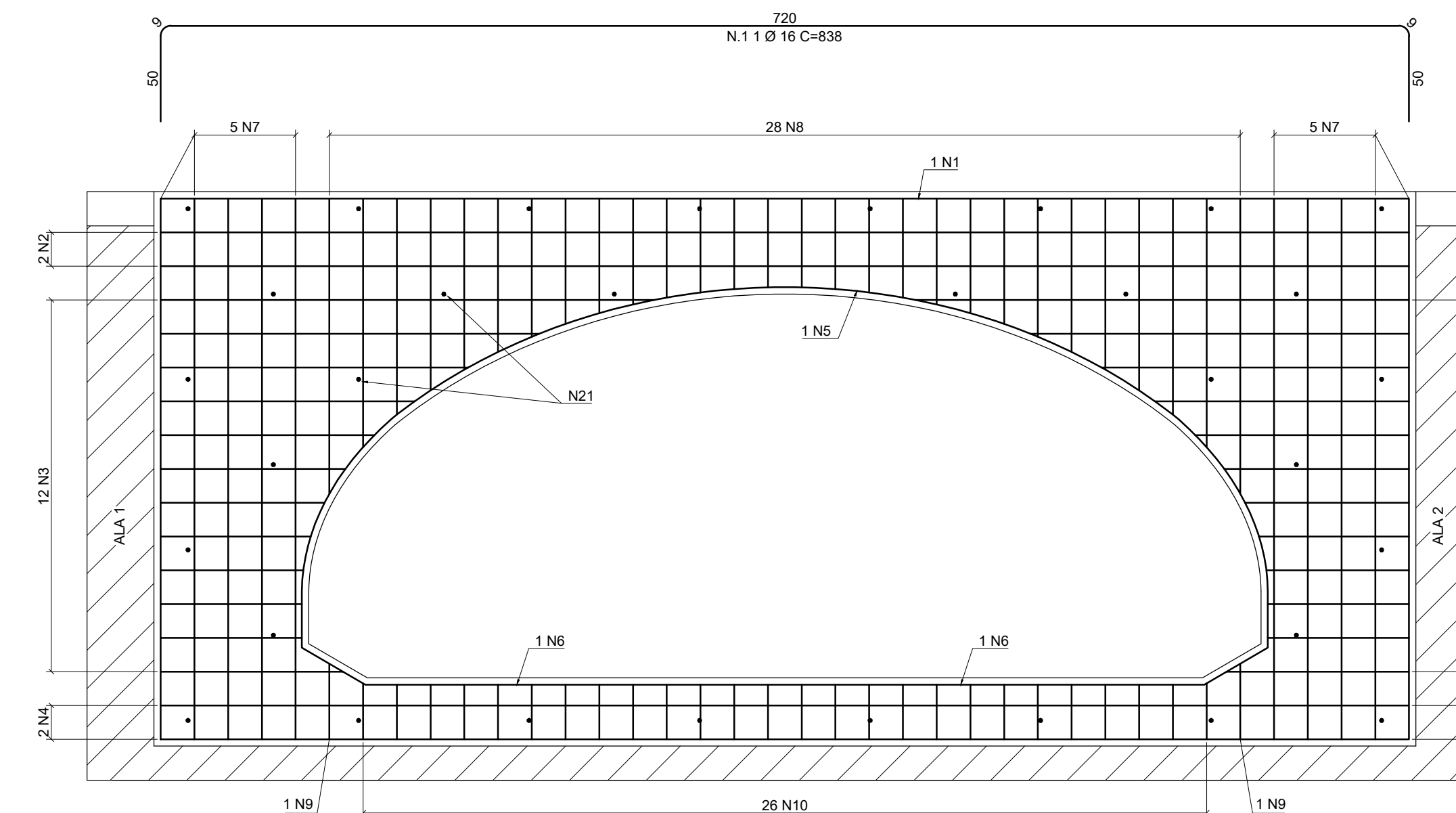


ESCALA 1:30

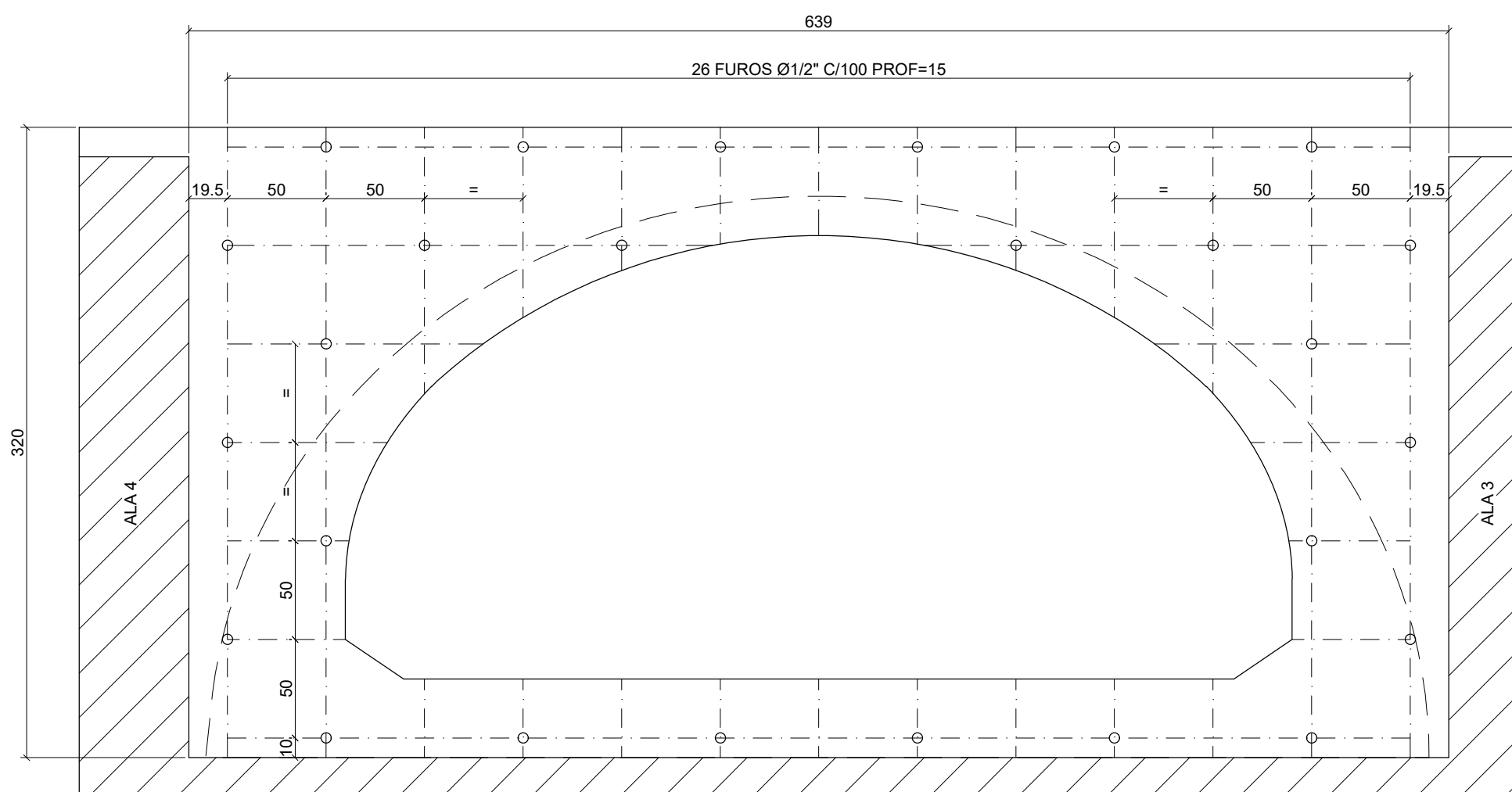
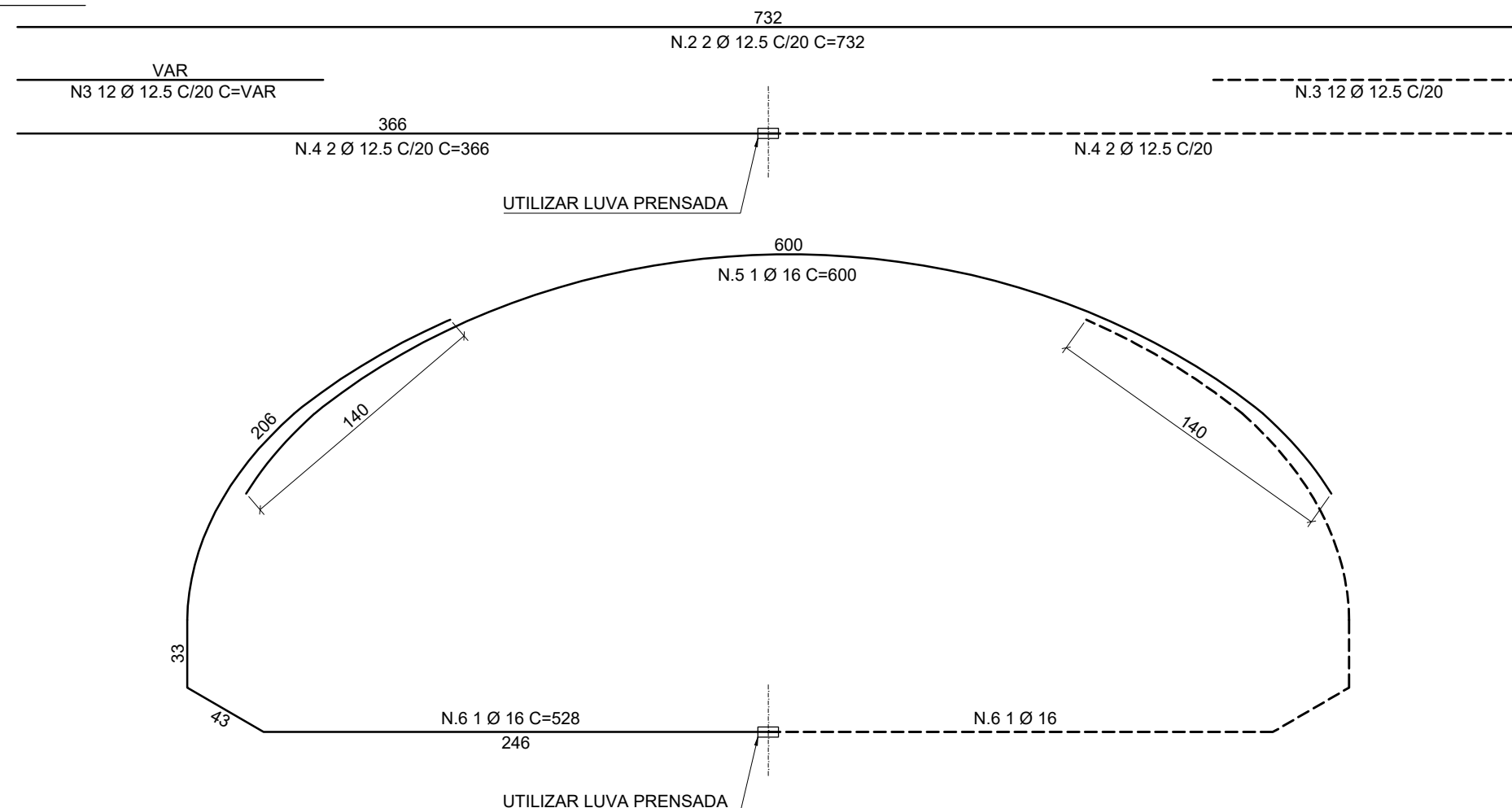


PAREDE 1

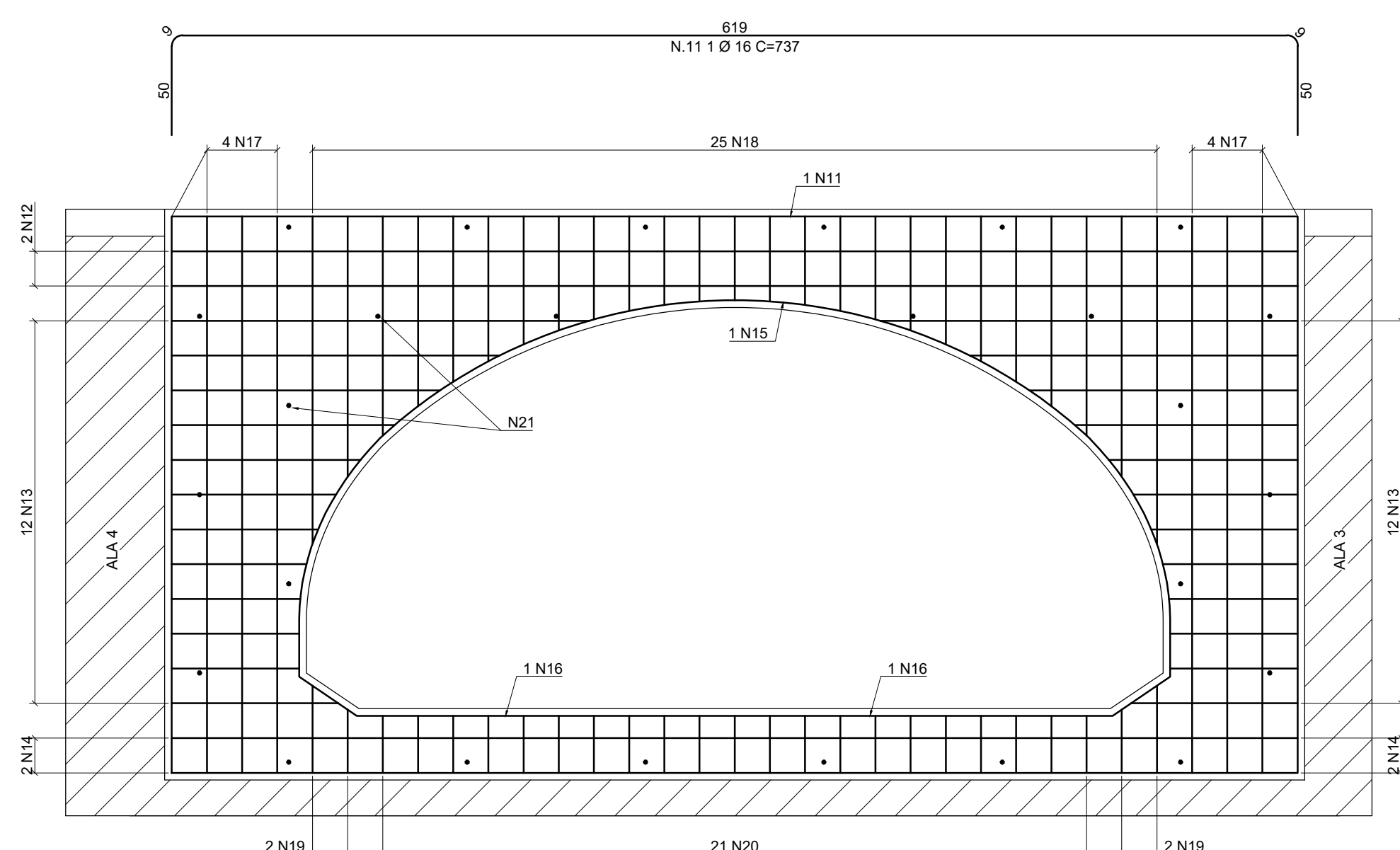
ESCALA 1:30



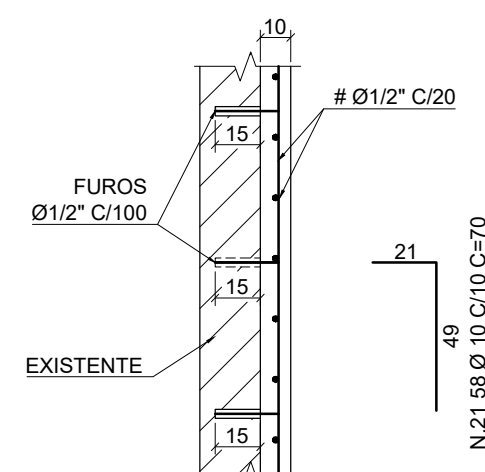
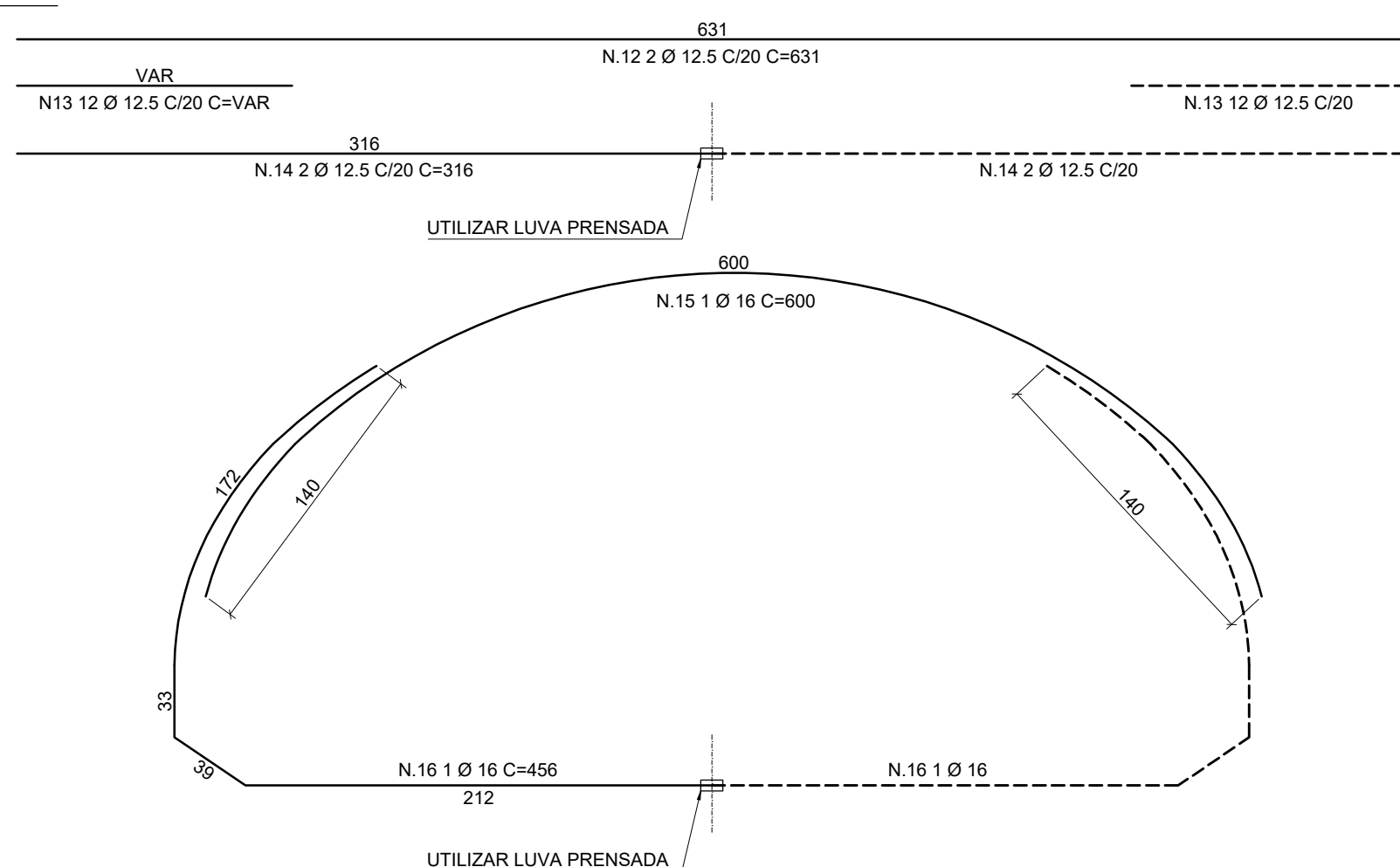
PAREDE 1



PAREDE 2



PAREDE 2



CORTE TÍPICO

ESCALA 1:25

LISTA DE FERROS					
N	CA50 Ø	CA25 Ø	QUANT.	COMPRIMENTO(cm)	
				UNIT.	TOTAL
1	16		1	838	838
2	12.5		2	732	1464
3	12.5	24	VAR	3600	
4	12.5	4	366	1464	
5	16	1	600	600	
6	16	2	528	1056	
7	12.5	10	317	3170	
8	12.5	28	VAR	2800	
9	12.5	2	44	88	
10	12.5	26	32	832	
11	16	1	737	737	
12	12.5	2	631	1262	
13	12.5	24	VAR	3000	
14	12.5	4	316	1264	
15	16	1	600	600	
16	16	2	456	912	
17	12.5	8	312	2496	
18	12.5	25	VAR	2325	
19	12.5	4	VAR	180	
20	12.5	21	32	672	
21	10	58	70	4060	

RESUMO AÇO CA-50			
Ø	kg/m	m	kg
10	0.63	41	26
12.5	1.00	246	246
16	1.60	47	75
TOTAL			347

NOTAS:

- 1- MEDIDAS EM CENTÍMETROS, BITOLAS EM MILÍMETROS, FUROS EM POLEGADAS, EXCETO ONDE INDICADO
- 2 - CONCRETO ESTRUTURAL: C40 (FATOR $A/C \leq 0,45$)
- 3 - AÇO CA50
- 4 - COBRIMENTO DA ARMADURA: 4,0cm
- 5 - INSTALAR ENSEDADEIRAS ANTES DO INÍCIO DOS SERVIÇOS
- 6 - APLICAR, LIMPAR E TRATAR AS SUPERFÍCIES DE CONTATO ENTRE CONCRETO VELHO e NOVO
- 7 - UTILIZAR ADESIVO EPOXIDICO NAS SUPERFÍCIES VERTICAIS DE CONTATO ENTRE CONCRETO VELHO e NOVO
- 8 - UTILIZAR RESINA EPOXIDICA NO CHUMBAMENTO DAS ARMADURAS
- 9 - VERIFICAR MEDIDAS NO LOCAL

[illegible]